

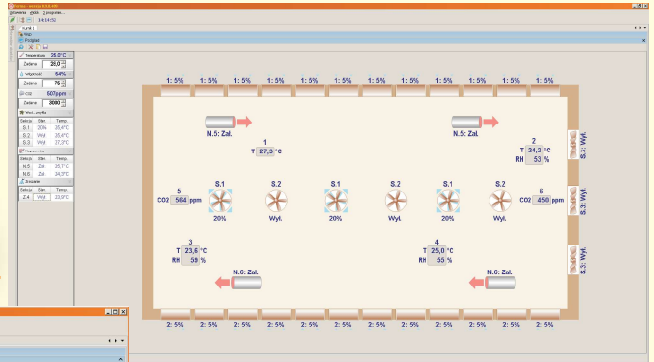
FARM Computer Program

Communication of the controller with a computer (RS-485 port).

Remote change in settings and current monitoring of the microclimate parameters.

Reading of recorded data, their analysis and visualisation in the shape of charts and tables.

Operation within the Windows environment from XP SP3 to present version.



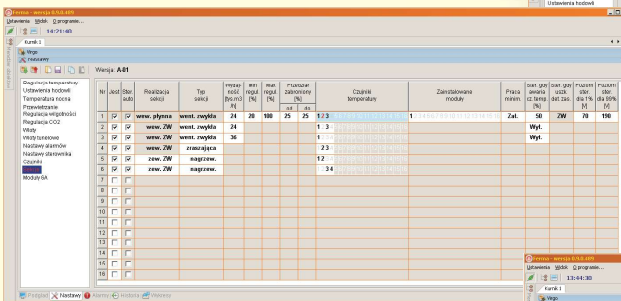
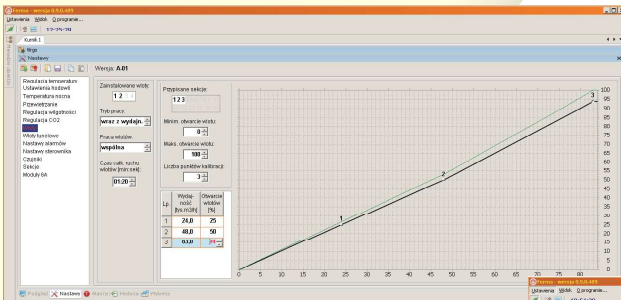
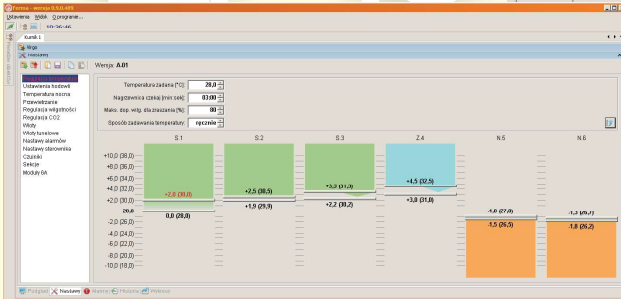
Graphic presentation of settings and visualisation of the current control process.

The adjustment of multi-point characteristics of the inlets opening in the function of ventilation efficiency- optimisation of the underpressure.

Making the configuration of VIRGO regulator easier, the possibility of quick settings transfer to another VIRGOs, saving the configuration as a file on the computer.

Displaying the alarm messages and operation history.

The edition of alarm thresholds for temperature, humidity and carbon dioxide concentration.



The possibility to equip a group of controllers with the Ethernet module or Wi-Fi that allows to connect them to the local network or the Internet- such solution allows to connect all controllers in the farm to the network and control them remotely.

