

# WGJ-SILO Weighing System for Silos



The system consists of the WGJ-SILO controller and so called ST-10t 'strain gauge feet' connected with the set of WGJ-Sx digital converters of weight.

The WGJ-SILO system provides independent and simultaneous measurement as well as recording of weight for 4 silos of up to 8 legs each.

For each silo there should be used one set of the WGJ-Sx converters, while under each leg there should be mounted one 'strain gauge foot'.

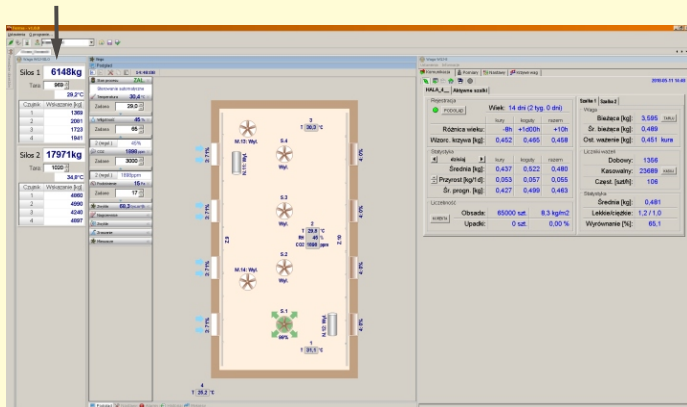
Bases for silo legs are prepared individually depending on the kind of a silo 'foot'. The measurement range of a 'strain gauge foot' is 10 tons.

All measurement data are gathered in one program where in a quick way it is possible to preview the feed dispense as well as the history of change in silos weight.

Additionally, the system is equipped with an alarm function (e.g. for uneven loading of each of feet, too small amount of feed, etc.) as well as the mode of automatic recording of a silo filling up.



The illustration of silos weighing in the JOTAFAN FARM program



The WGJ-SILO system can be integrated in the FARM computer software, together with the VIRGO controllers, VIRGO-INL controllers, the WGJ-8 weighing system for poultry and as in case of these devices it is possible to connect with the system via the Internet.